



Reslink Technologies

Proposal no 672

Category: Residential

SOLAR PROPOSAL

ONGRID 23KW 14, April 2026

Client name: Akash sir

Contact no: 8467839207

Address: Hapir

Prepared by:
Vaibhav

Prepared for:
Akash sir



Generated on
14, April 2026 | 3:28PM



ABOUT RESLINK TECHNOLOGIES

We are on a mission to deliver 10,000 world-class solar installations ensuring maximum performance, durability, and ROI for each & all project.

200kW
Total capacity installed

350+
Happy customers

10+
Cities

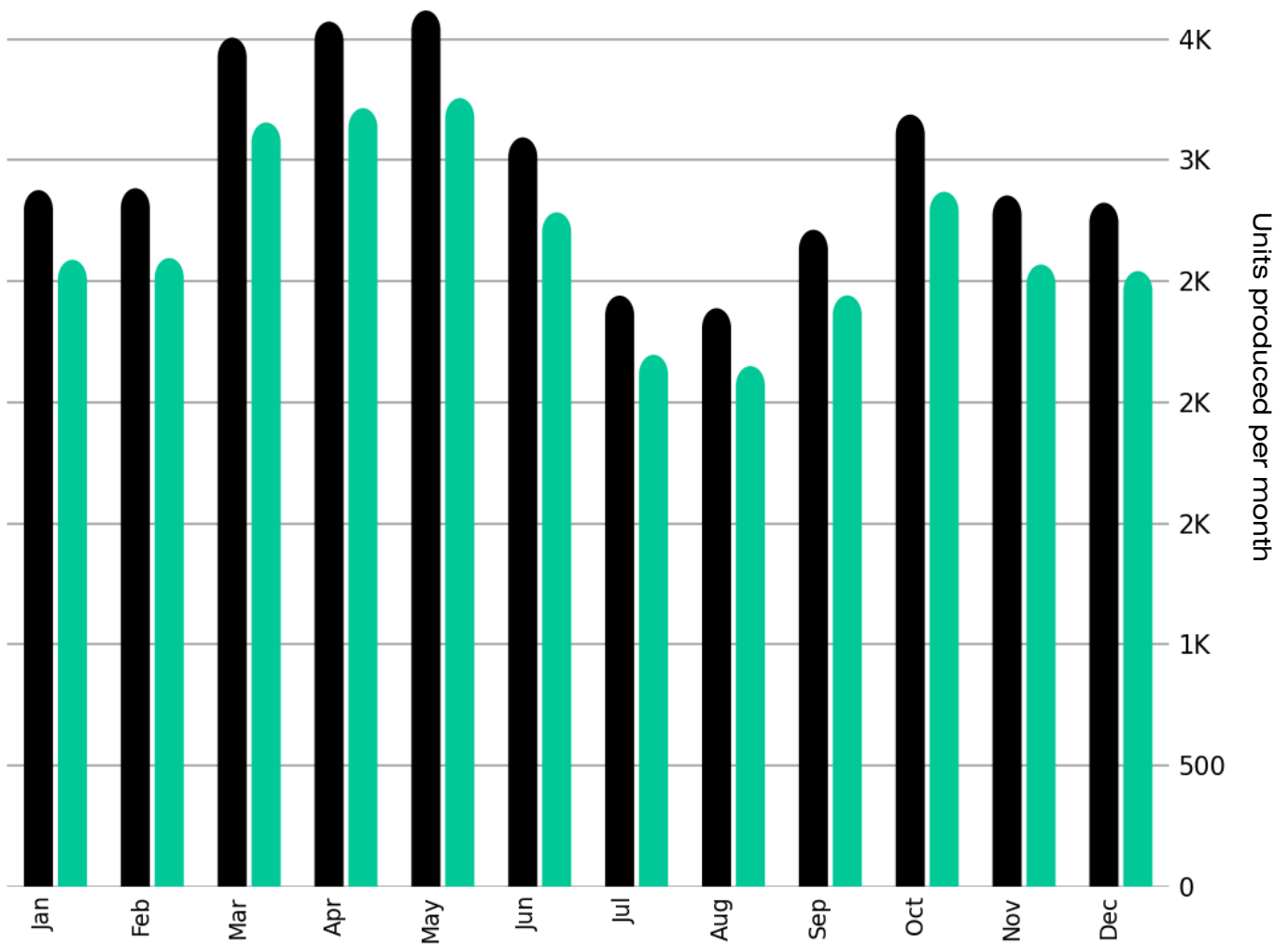


Each site is installed end to end with 5 Years AMC & monitoring



GENERATION

ROUND THE YEAR GENERATION



75%
PR: Performance Ratio

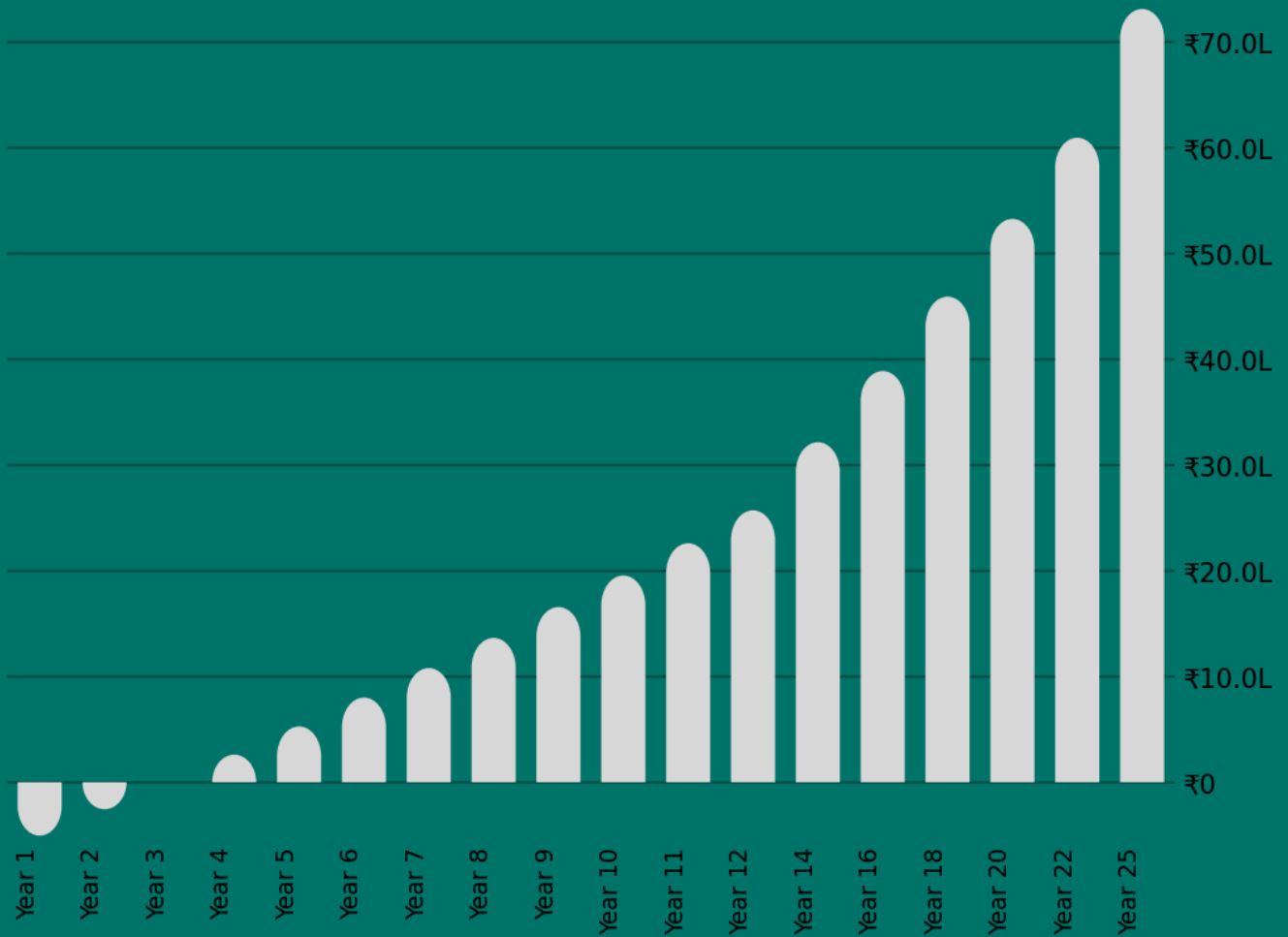
16%
Monsoon Dip

4.28
Average units per kW/Day

Generation figures are indicative and may vary with site conditions, weather patterns.

23KW ONGRID ROI

SOLAR IS ONE OF THE BEST INVESTMENT YOU WLLL EVER MAKE



₹2.4L

YEARLY SAVINGS

4 Years

PAYBACK PERIOD

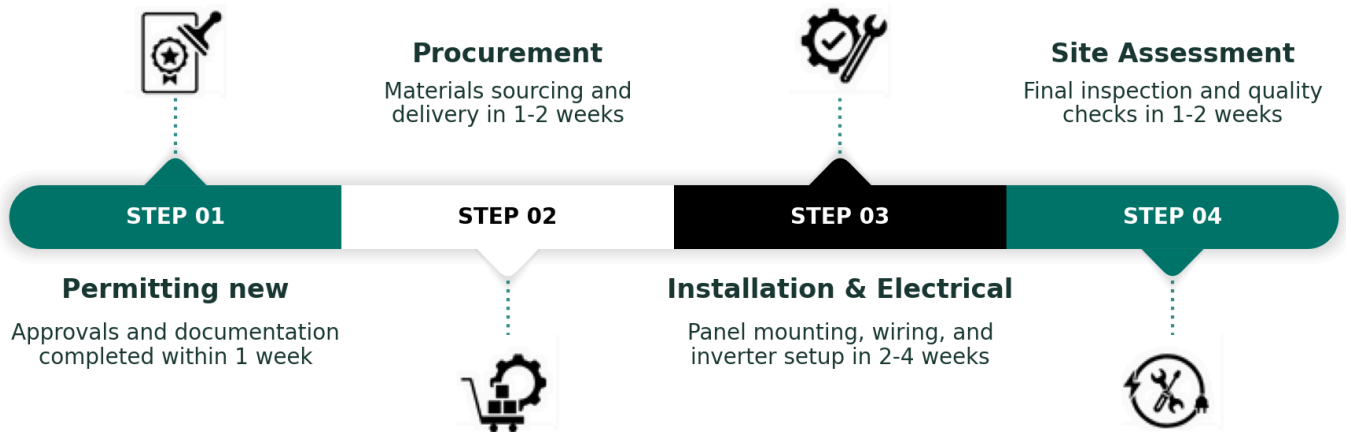
₹73L

TOTAL LIFETIME
SAVING

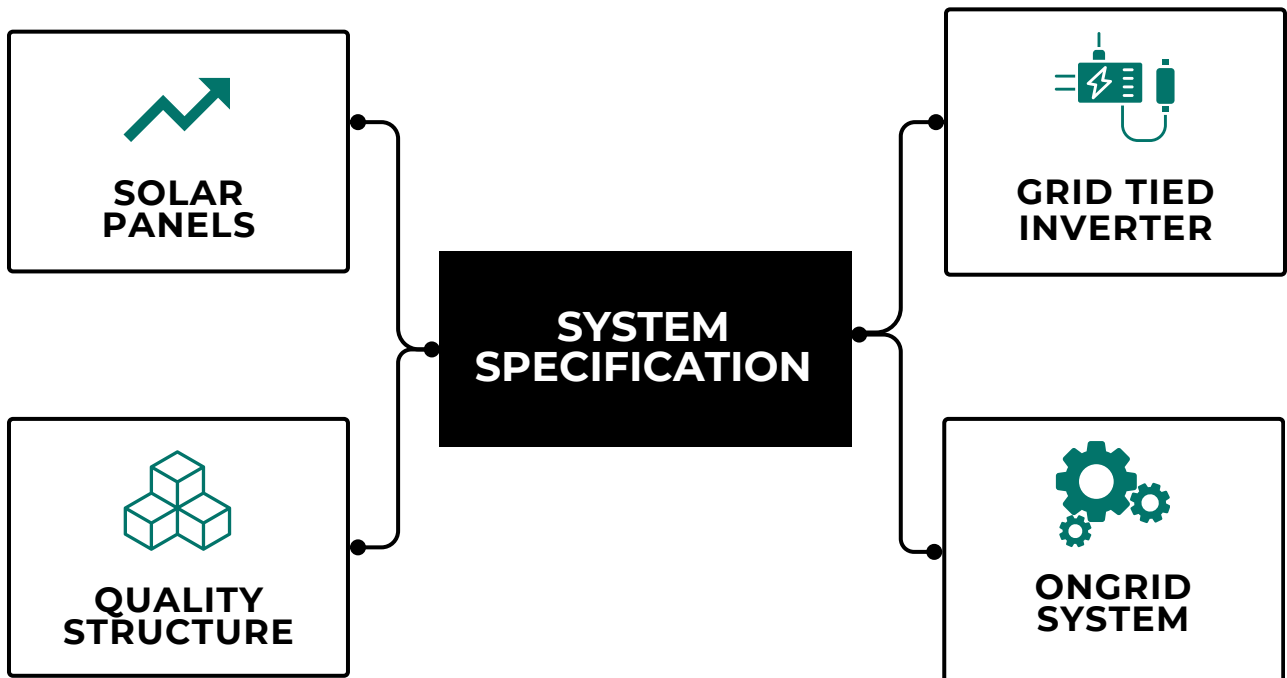


TIMELINE

TIMELINE AND MILESTONES



SYSTEM SPECIFICATION




















Net metering is entirely dependent on DISCOM, we don't control that process



SOLAR COMPONENTS

High-quality components from trusted **Tier-1 OEMs**, selected for performance, safety, and long-term ROI.

SPECIFICATIONS	BRAND	DESCRIPTION
 PANEL Type: Bifacial (40 panels) Capacity: 579 Warranty: 12/30 yrs (prod/perf)	  Waaree Group / Tata Po...	Modules offering high efficiency with backside generation, long performance life.
 INVERTER Type: On-Grid (5 inverters) Capacity: 5 kW Warranty: 10 years	  Sungrow / Havells	Smart inverter featuring high conversion efficiency, Wi-Fi monitoring, advanced protection systems.
 CABLE Type: UV resistant, Double Insulated Warranty: 8 years Spec: UV resistant, Double Insulated	  Havells / Polycab	DC 4/6 sq.mm and AC 10 sq.mm solar-grade cables ensures low-loss power transmission and UV resistance.
 ELECTRICAL Includes: ACDB, DCDB, LA-25 Standard: HDGI Earthing, LA-25	  True Power / Tata Power	ACDB, DCDB, MC4 connectors, earthing kit, and lightning arrester ensuring robust stability.
 STRUCTURE Warranty: 25 years Weight: 12 kg/kW	  JSW Steel / Tata Steel	Hot-dip galvanized mounting structure with corrosion resistance, engineered for optimal panel orientation.
 SERVICES End-to-end Installation Support: 5 Years AMC Ongoing monitoring	 Reslink Technologies	Professional installation with comprehensive after-sales support



OFFER & TERMS

COST

Description	Amount	Total
System Cost	Rs 7,57,576	Rs 7,57,576
GST Amount (8.9%)		Rs 67,424
Discount(if any)		Rs 82,500
Total Payable Cost		Rs 7,42,500

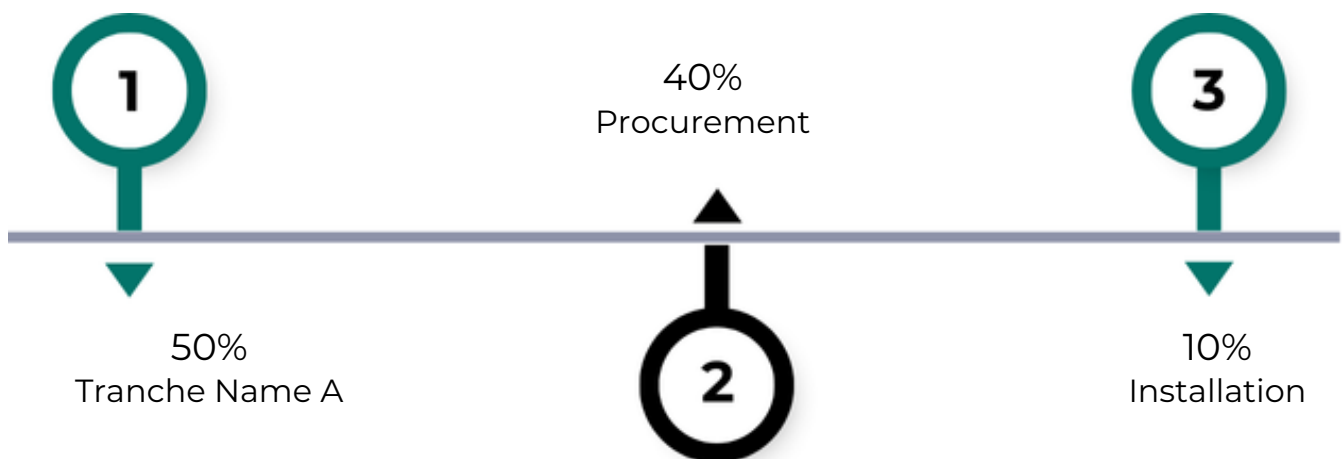
23kW ongrid solar system with tax @8.90% GST

SCOPE

What we cover under our services	
System Design	5 Years AMC & Monitoring
Installation	Commissioning

Delay in net metering is entirely on DISCOM, we don't control their operations

PAYMENT TERMS





ENVIRONMENT IMPACT

You are contributing to solve earth's biggest problem-
Climate Change



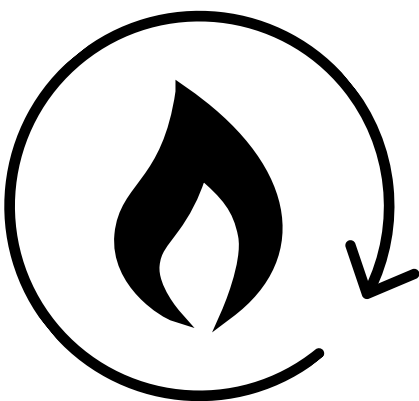
**CARBON DIOXIDE
OFFSET**

597.0 Metric Tons



**EQUIVALENT ACRES
OF FOREST**

27.1 Acres/Year



**COAL BURN
AVOIDED**

28.77 Metric Tons



THANK YOU

Looking forward to work and add value



Phone:

9425114368

Email:

kalyan@reslink.org

Website:

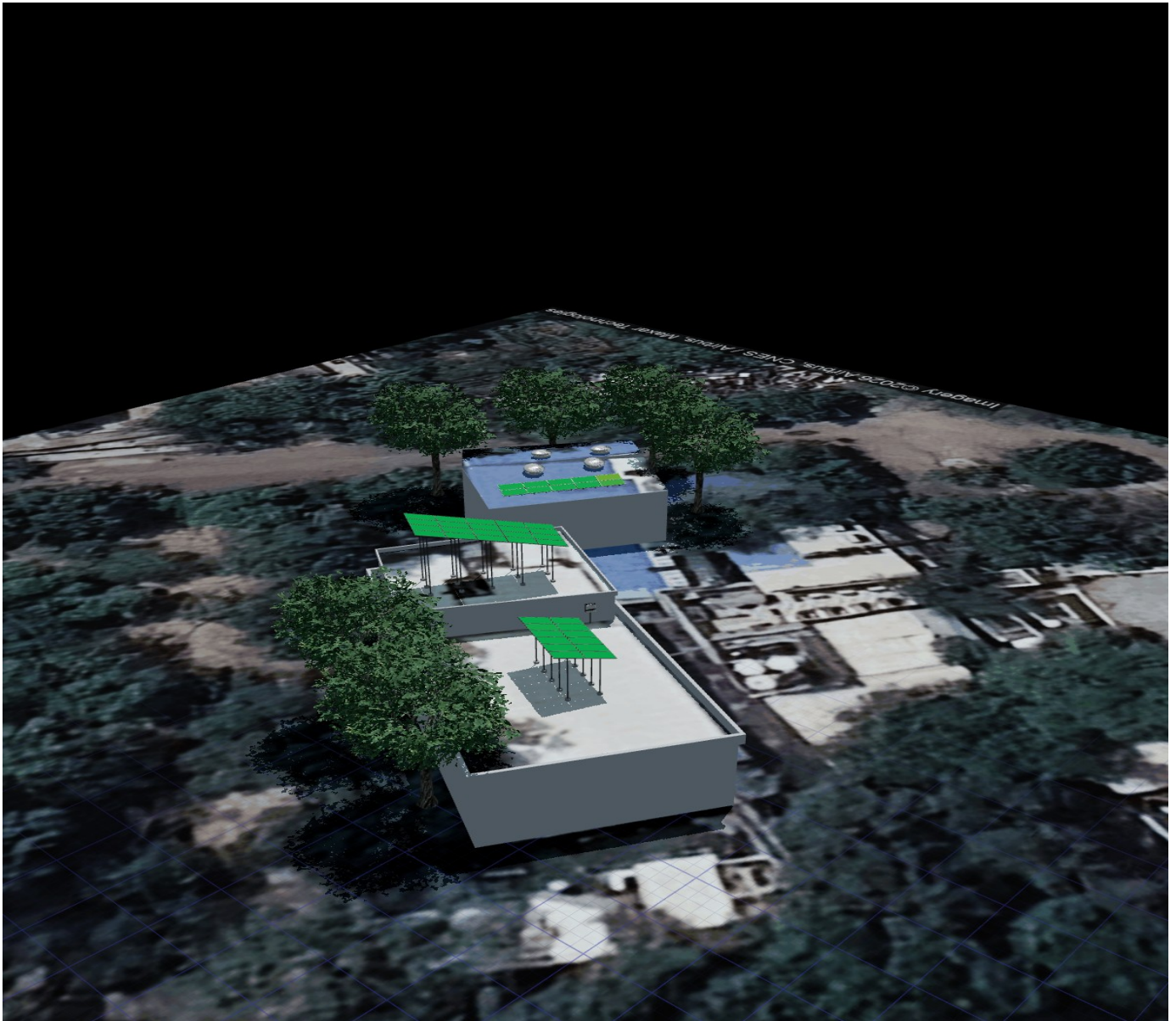
www.reslink.org

Address:

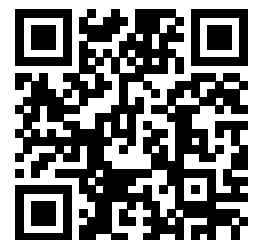
4A, Hauz khas, Delhi - 110017



3D DESIGN MODEL



Scan the QR code to explore an interactive 3D model of your solar rooftop with panel layout.

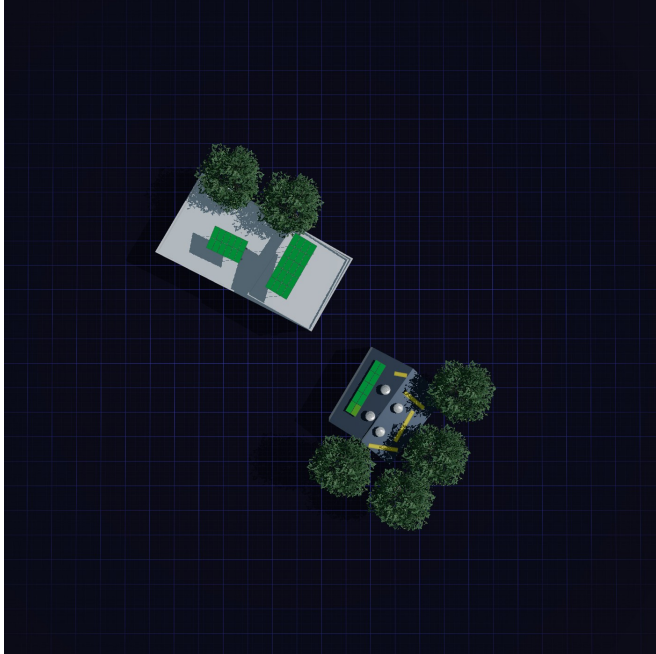


[View 3D Model](#)

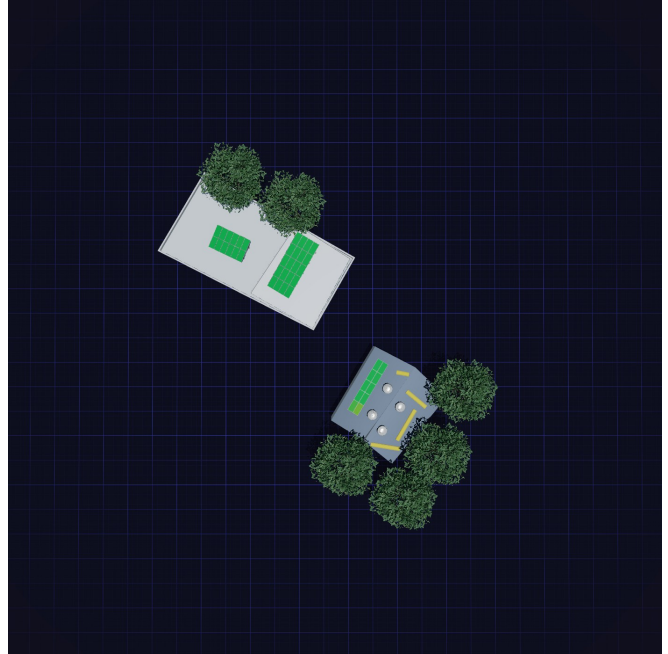


SHADOW ANALYSIS

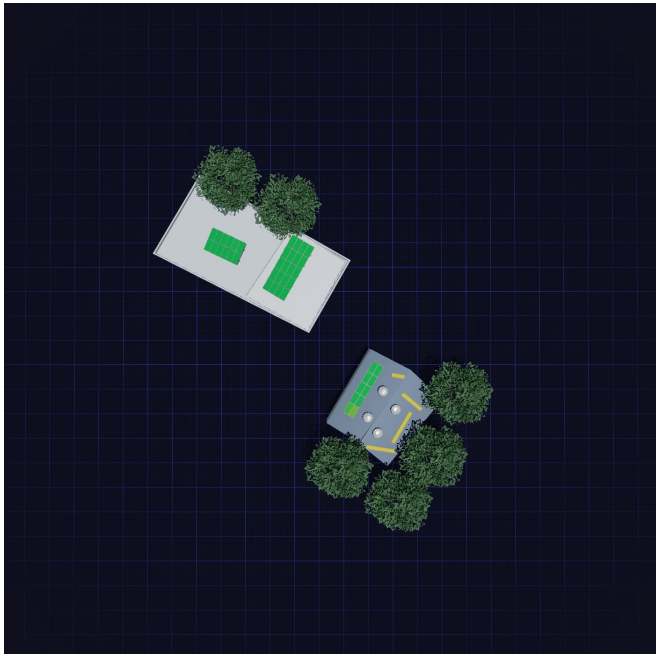
09:00 AM | 21 Jun 2026



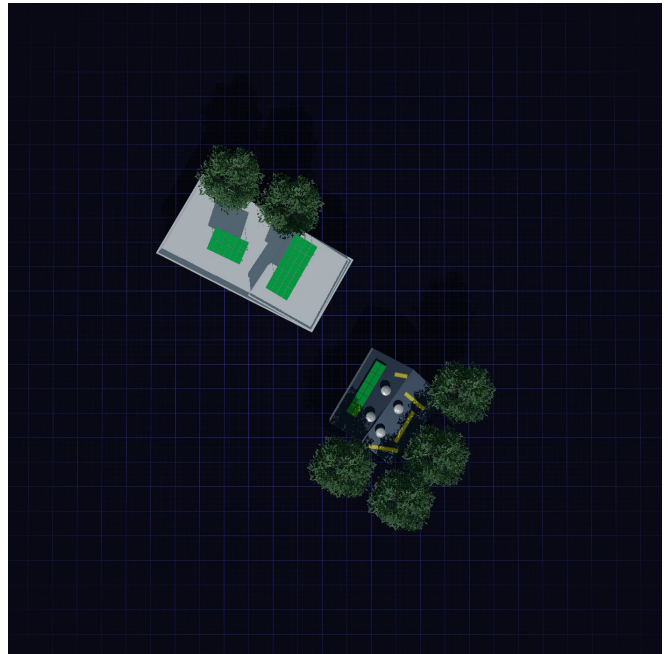
12:00 PM | 21 Jun 2026



12:00 PM | 21 Jun 2026



12:00 PM | 21 Dec 2026





ENERGY REPORT

ANNUAL GENERATION

32.2 MWh

per year (Year 1)

Specific Yield
1,380 kWh/kWp

Performance Ratio
77.3%

LOSSES BREAKDOWN

Temperature		9.2%
Shading		3.5%
Soiling		3.0%
Inverter		3.0%
Mismatch		2.0%
DC Wiring		2.0%
Total System Loss		22.7%

SYSTEM SUMMARY

Capacity

23.3kWp

Panels

42(555w)

Roof Area

811m²